

Connecticut Precast Corp.

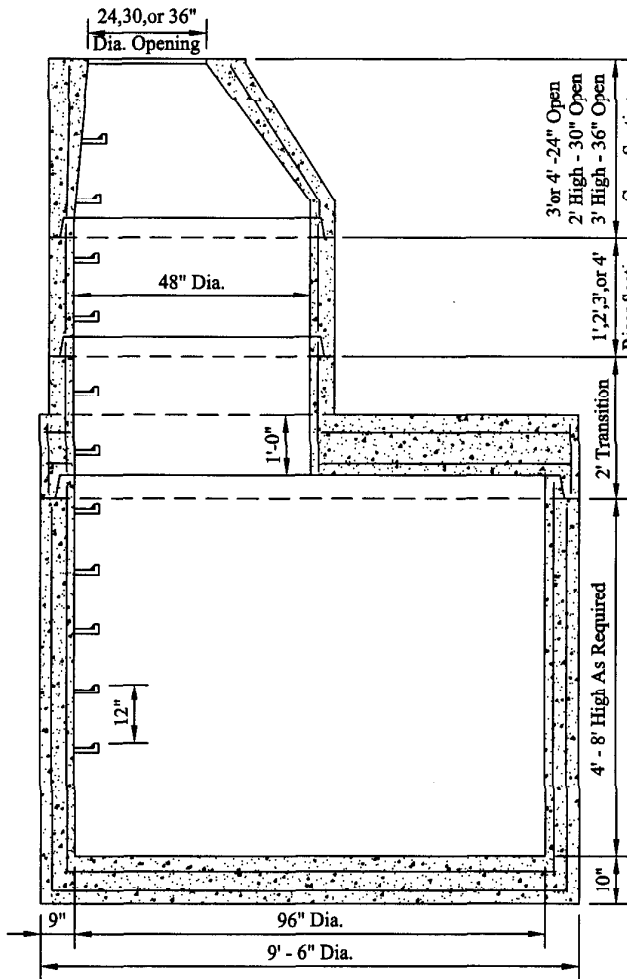
555 Fan Hill Road, Monroe, CT 06468

Telephone (203) 268-8688

Fax (203) 452-1007

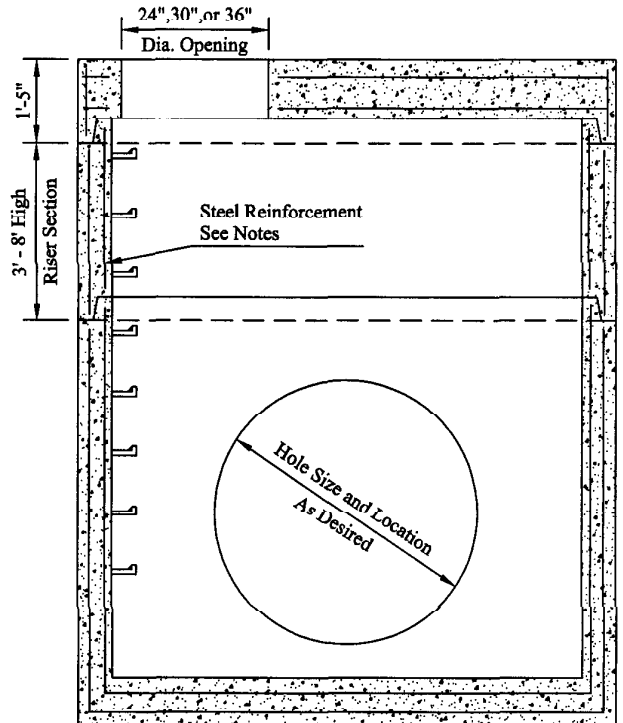
# Manholes

## 96" Diameter Precast



Approximate weights:

Base Slab . . . . .	10700 LBS.	24" Cone . . . . .	1600 LBS.
Risers/vf. . . . .	3100 LBS.	36" Cone . . . . .	2400 LBS.
Transition . . . . .	8900 LBS.	48" Cone . . . . .	3200 LBS.
Top Slab . . . . .	10200 LBS.		



**NOTES:**

1. Minimum Concrete Compressive Strength: 4,000PSI @ 28 Days.
2. Design Loading: AASHTO HS-20.
3. Meets or exceeds ASTM C478, AASHTO M-199, and CTDOT Specifications.
4. Steel reinforcement conforms to ASTM A-185 area 0.24 sq.in./vert. ft.
5. Type III air-entrained concrete.
6. Joints shall be sealed with a butyl rubber sealant conforming to ASTM C443 and C990, AASHTO M-198 Type B, and/or Federal Specification SS-S-00210 (201-A),
7. Steps shall be 1/2" dia. steel reinforced copolymer steps conforming to ASTM C478, AASHTO M-199, and OSHA Regulation 29 CFR 1910.27. Steps shall be cast in vertical alignment.
8. Base section is monolithic.