

Connecticut Precast Corp.

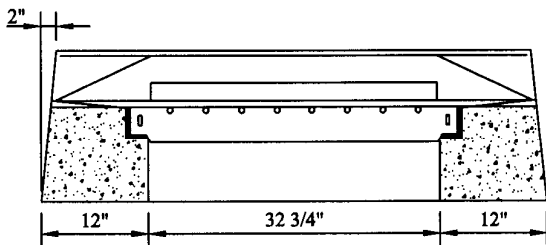
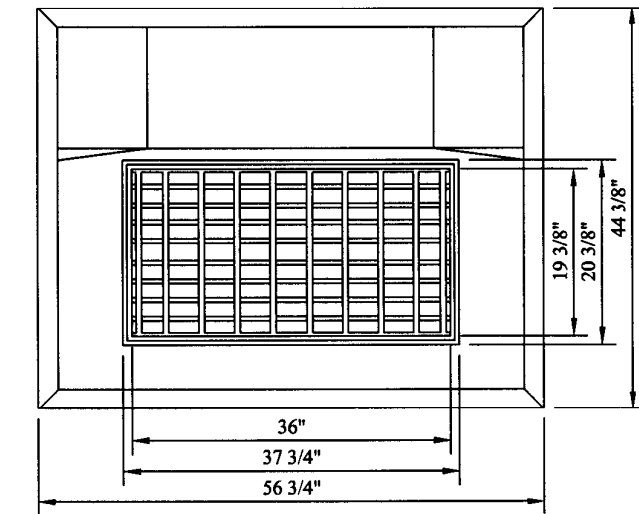
555 Fan Hill Road, Monroct, CT 06468

Telephone (203) 268-8688

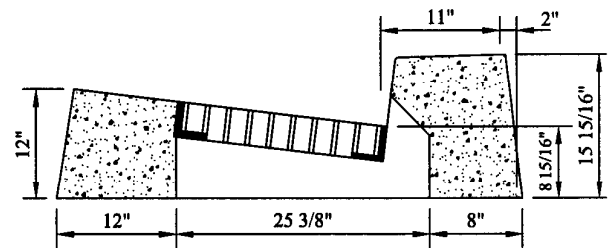
Fax (203) 452-1007

Catch Basins

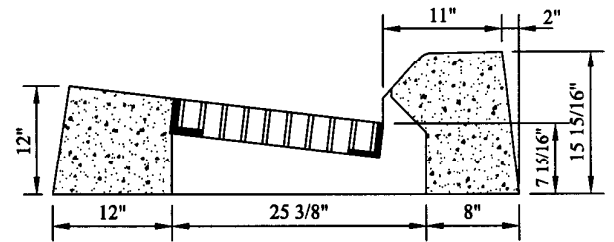
Connecticut State Highway Department
Standard - Curb Type Top



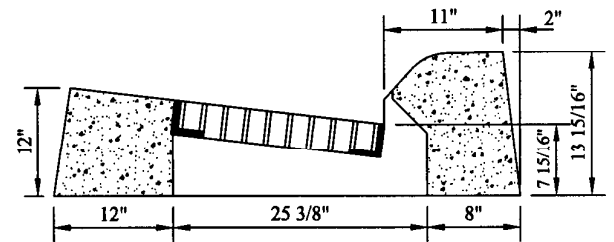
FRONT VIEW



Plain Curb Type



Bituminous Curb Type



Park Curb Type

NOTES:

1. Minimum Concrete Compressive Strength: 5,000 PSI @ 28 Days.
2. Design Loading: AASHTO HS-20.
3. Conforms to CTDOT standard specifications.
4. Steel reinforced with #4 bars.
5. Approximate weight: 1800 LBS.