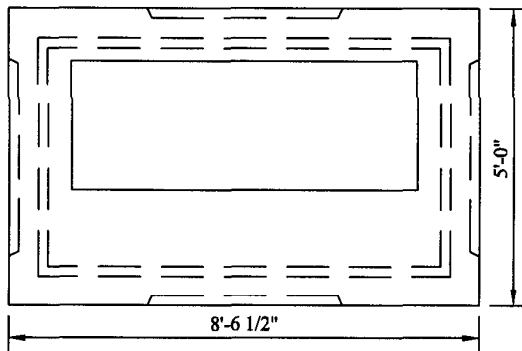


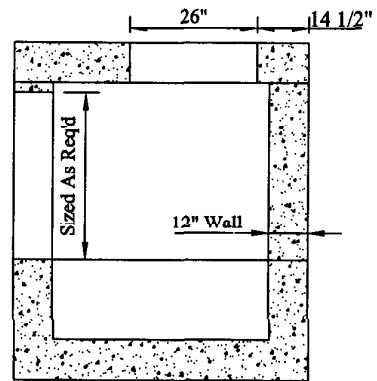
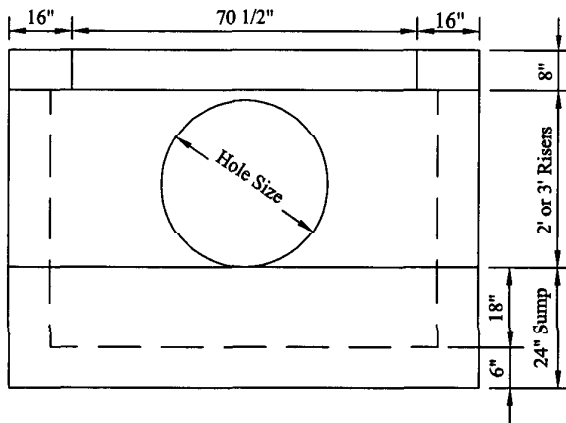
Connecticut Precast Corp.

555 Fan Hill Road, Monroe, CT 06468 Telephone (203) 268-8688
Fax (203) 452-1007

Catch Basins



Connecticut State Highway Department
Standard Double Type 2 - 12" wall



NOTES:

1. Minimum Concrete Compressive Strength: 4,000 PSI @ 28 Days.
2. Design Loading: AASHTO HS-20.
3. Materials meet or exceed ASTM C478 and CTDOT Specifications.
4. Steel reinforced with 4x4x4 mesh.
5. Approximate weights:

Slab top corbel.....	3,000 lbs.
2' riser.....	7,000 lbs.
3' riser.....	10,600 lbs.
18" sump.....	8,800 lbs.