

Connecticut Precast Corp.

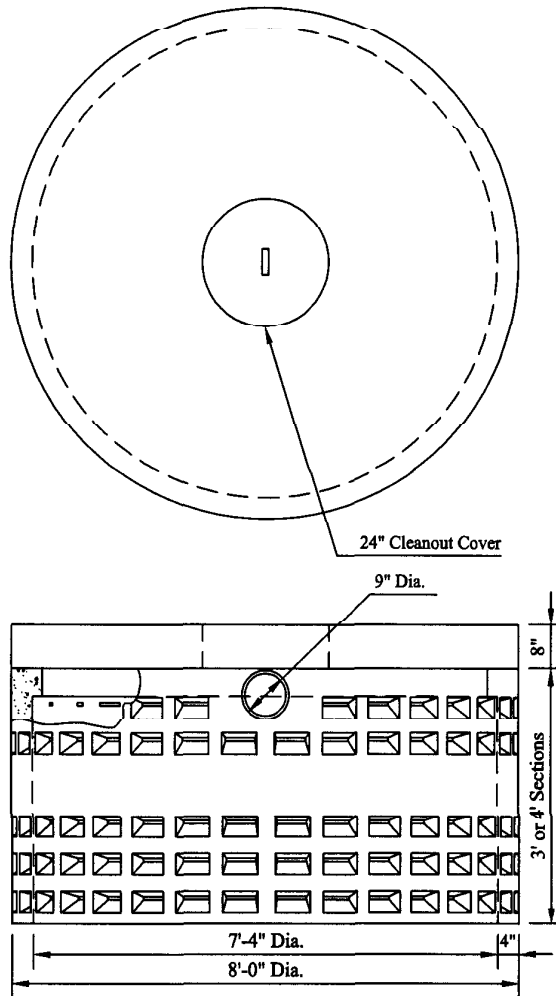
555 Fan Hill Road, Monroec, CT 06468

Telephone (203) 268-8688

Fax (203) 452-1007

Drywell

96" Diameter



INVERT HEIGHT	
3' Drywell	2' - 6"
4' Drywell	3' - 3"
6' Drywell	5' - 3"
8' Drywell	7' - 3"
10' Drywell	9' - 3"
12' Drywell	11' - 3"

NOTES:

1. Minimum Concrete Compressive Strength: 5,000 PSI @ 28 Days.
2. Design Loading: AASHTO HS20-44.
3. Steel reinforcement: ASTM A615, Grade 40. 1" Minimum Concrete Cover.
4. Slab Top reinforced with #5 rebar.
5. Gallons per vt. ft. = 376.01
6. Approximate weights:
 - 3' Section 4,500 lbs.
 - 4' Section 6,000 lbs.
 - 8" Slab Top . . . 5,900 lbs.