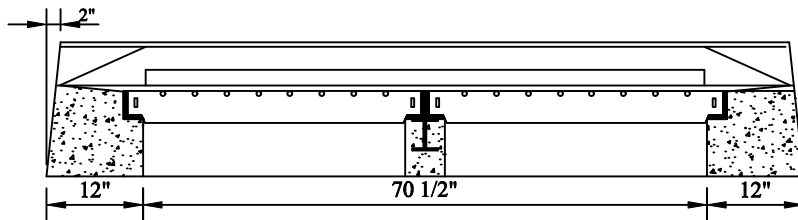
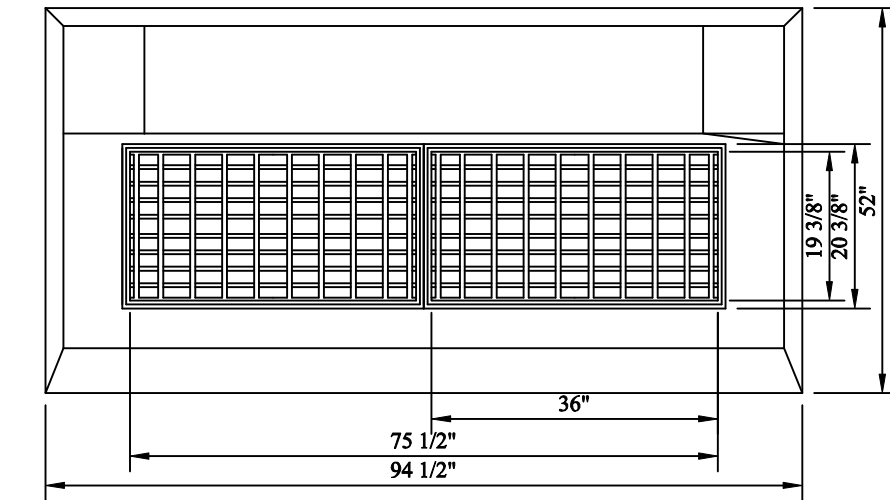


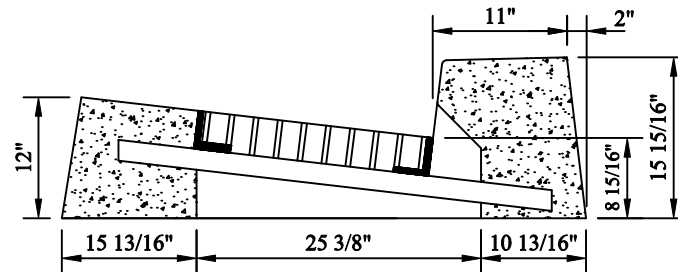


Catch Basins

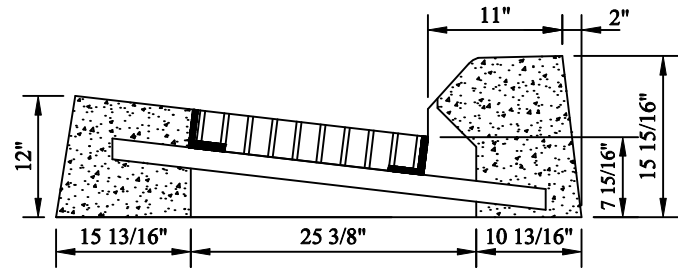
Connecticut State Highway Department
Standard Double Type 2 Curb Top



FRONT VIEW



Plain Curb Type



Bituminious Curb Type

NOTES:

1. Minimum Concrete Compressive Strength: 5,000 PSI @ 28 Days.
2. Design Loading: AASHTO HS-20.
3. Conforms to CTDOT standard specifications.
4. Steel reinforced with #4 bars.
5. Approximate weight: 3800 LBS.