



# Connecticut Precast Corp.

Manufacturers of Concrete Products

555 Fan Hill Road, Monroe, CT 06468  
 Telephone (203) 268-8688 Fax (203) 452-1007

www.ctprecast.com

## Pump Chamber

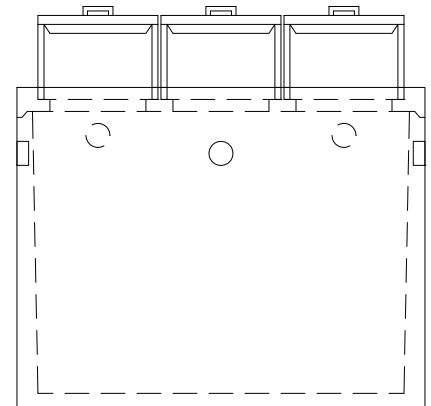
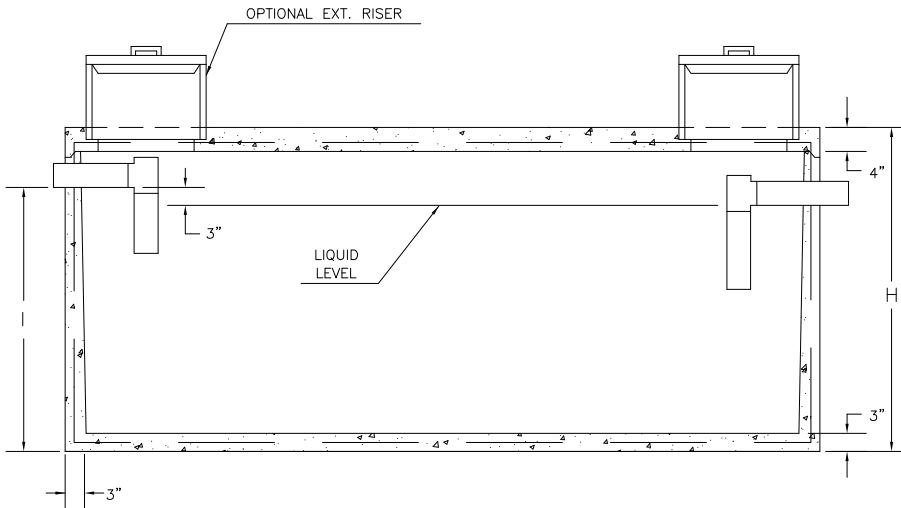
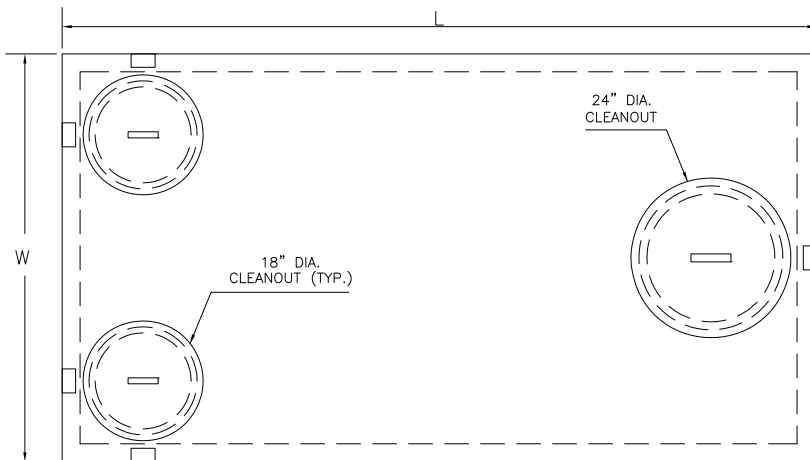
### PRECAST CONCRETE 1250 Gallon Capacity Residential

MODEL NO.	LIQUID CAPACITY	LENGTH L	WIDTH W	INVERT I	HEIGHT H	WEIGHT (LBS.)
P1250RES	1250	10'-6"	5'-8"	3'-8"	4'-6"	9650

NOTES:

1. Concrete - 4,000 PSI @ 28 DAYS.
2. Meets or exceeds state and local requirements.
3. All shi lap joints sealed with Butyl Rubber.
4. Non-traffic loading use only.
5. Single compartment chamber. Monolithic Design.
6. Side inlet pipes shall extend to cleanout cover thru cast in pipe support.
7. Maximum fill over top of tank - 3 feet.
8. Chamber shall be supplied with tees.
9. Chamber shall be marked with manufacturer name, phone no., tank capacity, date of manufacture, and ASTM C1227 conformance.

Pump Chamber



\*\*=Nominal Dimension. Slight variation in dimensions may occur due to tapering for manufacturing purposes.