



Connecticut Precast Corp.

Manufacturers of Concrete Products

555 Fan Hill Road, Monroe, CT 06468
 Telephone (203) 268-8688 Fax (203) 452-1007

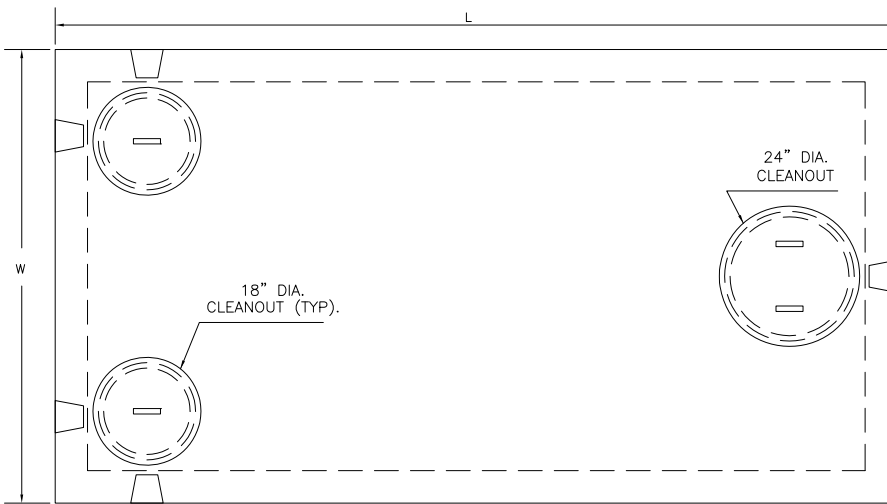
www.ctprecast.com

Pump Chamber

MODEL NO.	LIQUID CAPACITY	LENGTH L	WIDTH W	INVERT I	HEIGHT H	WEIGHT (LBS.)
P4500(6X12)	4500	13'-0"	7'-0"	See Below	10'-7"	41756
Invert (I) for $\varnothing 4"$ PVC is 9'-1". Invert (I) for $\varnothing 6"$ PVC is 9'-0".						

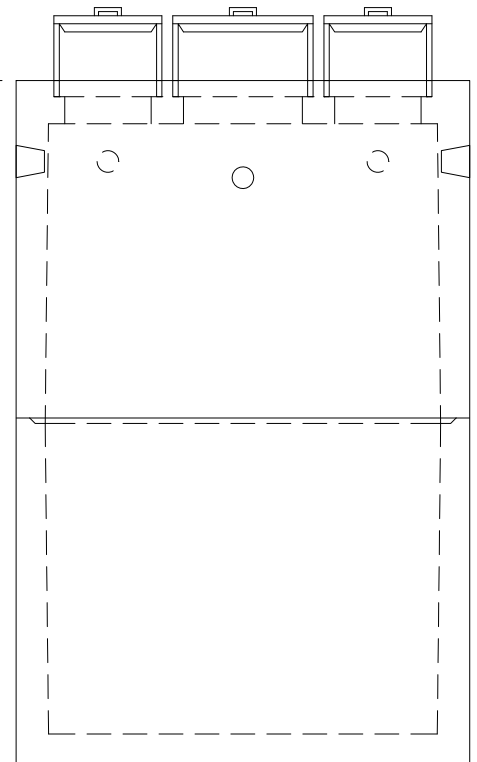
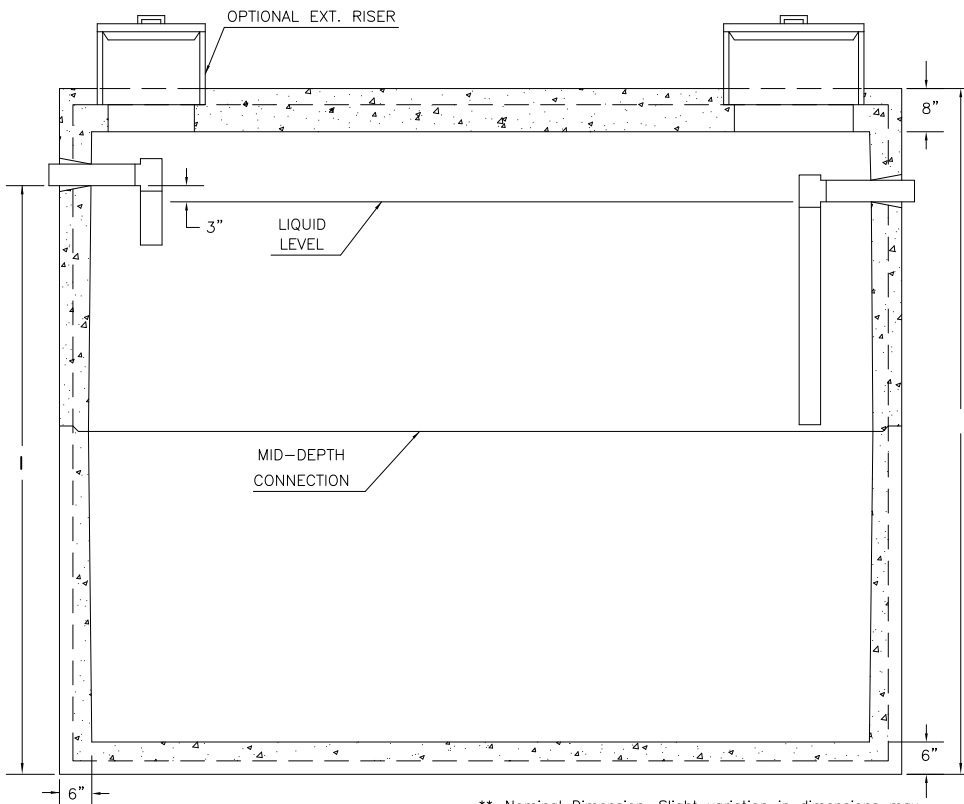
PRECAST CONCRETE
4500 Gallon Capacity
6'-0" X 12'-0" (H2O Loading)

Pump Chamber



NOTES:

1. Concrete - 4,000 PSI @ 28 DAYS.
2. Meets or exceeds state and local requirements.
3. All shiplap joints sealed with Butyl Rubber.
4. Design loading: AASHTO HS-20.
5. Single compartment chamber.
6. Side inlet pipes shall extend to cleanout cover thru cast in pipe support.
7. Maximum fill over top of chamber - 3 feet.
8. Chamber shall be supplied with tees.
9. Chamber shall be marked with manufacturer name, and phone no., tank capacity, date of manufacture, and ASTM C1227 conformance.



**=Nominal Dimension. Slight variation in dimensions may occur due to tapering for manufacturing purposes.