



# Connecticut Precast Corp.

Manufacturers of Concrete Products

555 Fan Hill Road, Monroe, CT 06468  
 Telephone (203) 268-8688 Fax (203) 452-1007

www.ctprecast.com

## Pump Chamber

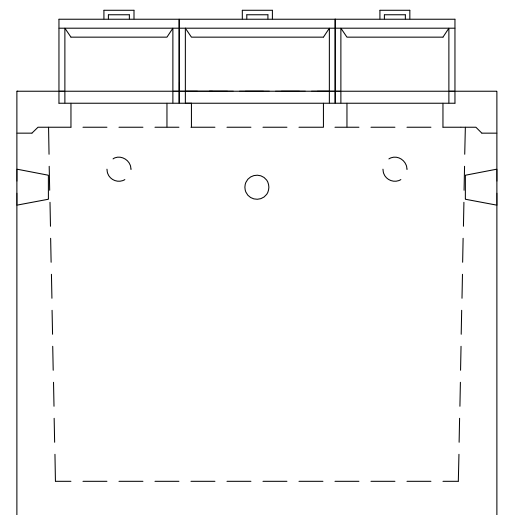
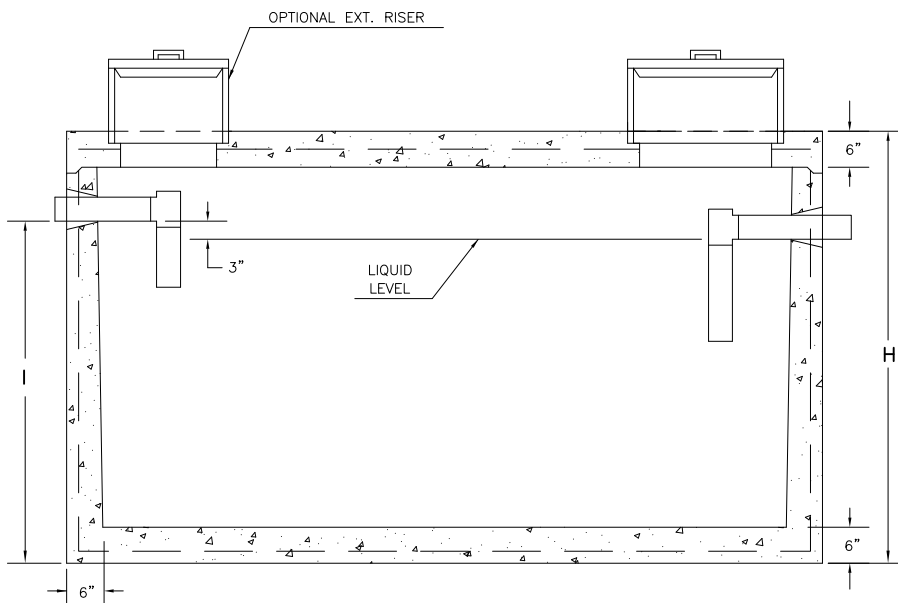
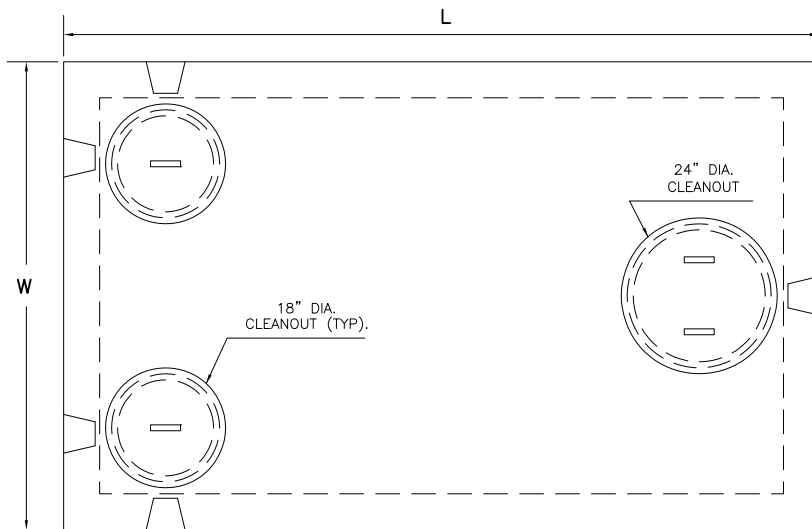
MODEL NO.	LIQUID CAPACITY	LENGTH L	WIDTH W	INVERT I	HEIGHT H	WEIGHT (LBS.)
P1500H20	1500	10'-6"	6'-6"	See Below	6'-0"	21900
Invert (I) for $\varnothing 4"$ PVC is 4'-10". Invert (I) for $\varnothing 6"$ PVC is 4'-9".						

### PRECAST CONCRETE 1500 Gallon Capacity H-20 Loading

Pump Chamber

NOTES:

1. Concrete - 4,000 PSI @ 28 DAYS.
2. Meets or exceeds state and local requirements.
3. All shiplap joints sealed with Butyl Rubber.
4. Design loading: AASHTO HS-20.
5. Single compartment chamber.
6. Side inlet pipes shall extend to cleanout cover thru cast in pipe support.
7. Maximum fill over top of tank - 3 feet.
8. Chamber shall be supplied with tees.
9. Chamber shall be marked with manufacturer name, phone no., tank capacity, date of manufacture, and ASTM C1227 conformance.



\*\*=Nominal Dimension. Slight variation in dimensions may occur due to tapering for manufacturing purposes.