

Connecticut Precast Corp.

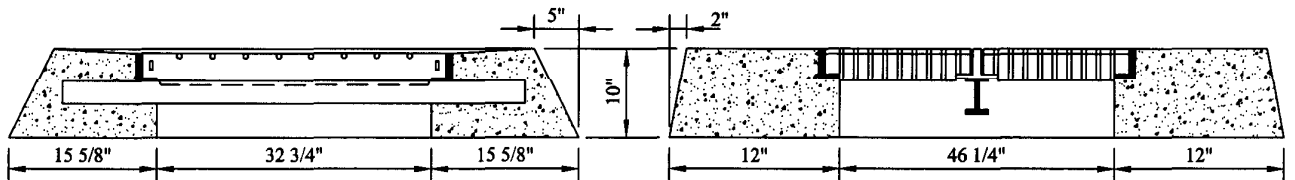
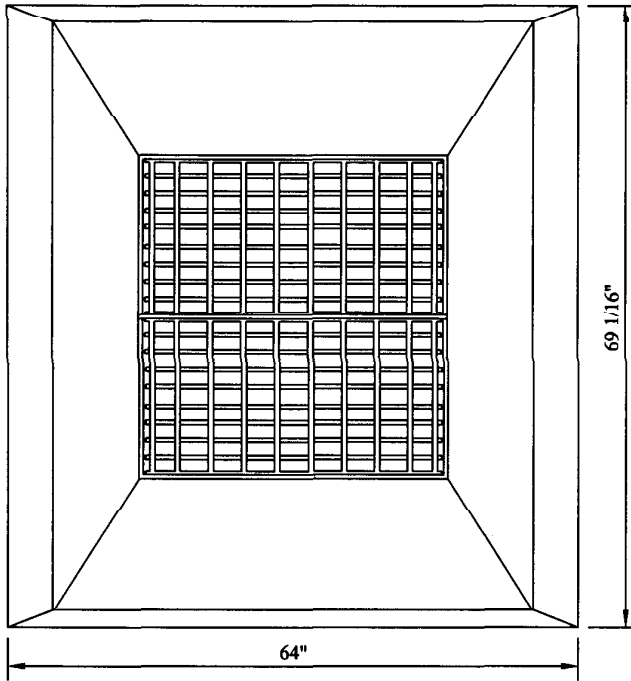
555 Fan Hill Road, Monroe, CT 06468

Telephone (203) 268-8688

Fax (203) 452-1007

# Catch Basins

Connecticut State Highway Department  
Standard Double Type 1 "C-L" Top



**NOTES:**

1. Minimum Concrete Compressive Strength: 5,000 PSI @ 28 Days.
2. Design Loading: AASHTO HS-20.
3. Conforms to CTDOT standard specifications.
4. Steel reinforced with #4 bars.
5. Approximate weight: 2400 LBS.